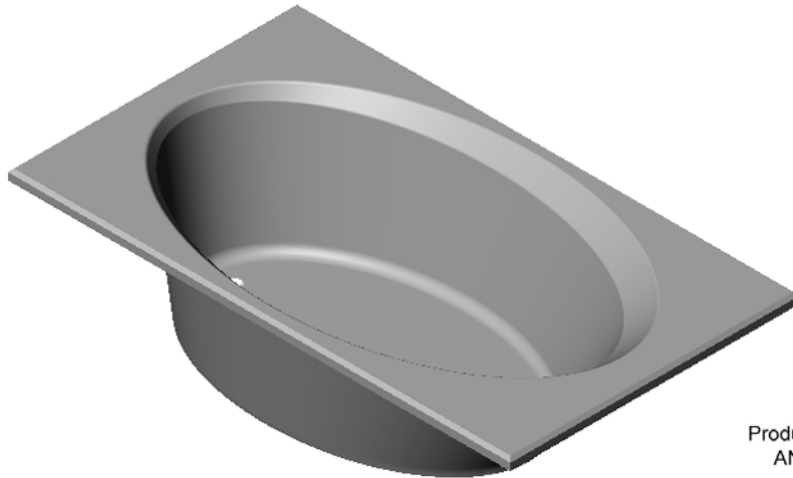


## Installation Instructions for Acrylic Bathtubs



Product complies with  
ANSI Z124.1-95





## ACRYLIC BATHTUB INSTALL

### **ATTENTION INSTALLER:**

Be sure to leave the User Care and Maintenance for the Homeowner.

Solure bathtubs are designed and engineered for easy installation and years of trouble free enjoyment and meet or exceed national building and quality standards. For any questions, please call (661) 257-4060.

### **IMPORTANT SAFETY INSTRUCTIONS**

INSTRUCTIONS PERTAINING TO A RISK OF FIRE, ELECTRIC SHOCK, OR INJURY TO PERSON

### **WARNING: THE FOLLOWING BASIC PRECAUTIONS SHOULD BE FOLLOWED:**

1. SAVE THESE INSTRUCTIONS.
2. READ AND FOLLOW ALL INSTRUCTIONS.
3. This bathtub is only to be used as described in this manual. Do not use devices or accessories that are not approved in this manual. Doing so will void the warranty. Please contact Solure at the number on the cover of this manual for any concerns.
4. If the tub is jetted with a whirlpool system, IMMEDIATELY read the manufacturers instructions for the safe operation of the whirlpool system.

**Homeowner:** Read and keep these instructions for future reference and possible service.

### **User Care and Maintenance**

**WARNING:** Any service or maintenance other than described within these instructions or authorized in writing by Solure or a qualified company technician may cause damage to the bathtub and void the warranty.

- Do Not use hard abrasive or any cleaning agents that may scratch, crack, or discolor the acrylic surface.
- Do Not use paint thinner, acetone (nail polish remover), nail polish, gasoline, pine oil, etc. as these can cause discoloration and cracking. Isopropyl alcohol may be used to remove grease, paint or some glue from stickers. Always use a clean soft cloth.
- Use common household cleaners such as Lysol® Basin™ or mild dishwashing detergent to clean your bathtub and keep it fresh and looking 'new'.
- Only use soft plastic or wood tools to remove any paint or plaster, as metal blades, scrapers, or putty knives may scratch the surface of the bathtub.
- Automotive wax or rubbing compound (white or cream colored) can be used to remove light surface scratches by lightly buffing them out by hand. Carnauba wax can also be used to protect and shine the bathtub.
- If you are not sure, try the product on a small test area that is not conspicuous and let it stand for 24 hours to verify that no cracks or discoloration appear.
- Please check the owner's manual of the whirlpool system for specific care and cleaning methods if the bathtub is equipped with this type of system.

**WARNING:** For bathtubs with whirlpool units installed, the system should be flushed periodically (approx. every 3 months). As a minimum, the tub should be filled with water and ½ cup household bleach. Run the system for approx. 10 minutes and then drain the tub.

## GENERAL REQUIREMENTS FOR INSTALLATION

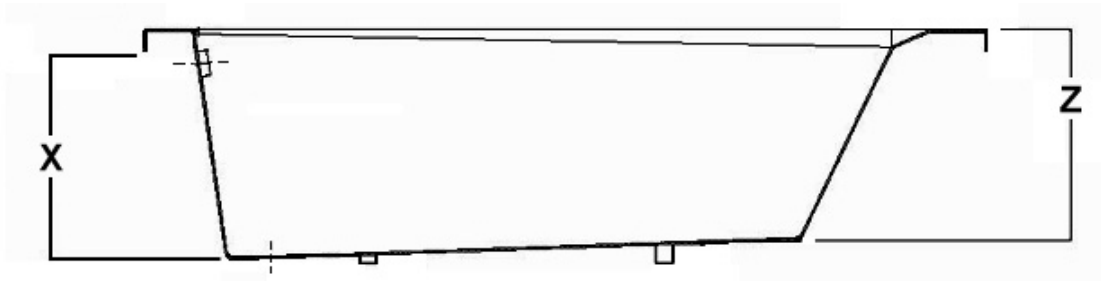
The installation of this bathtub must meet all applicable codes and regulations. Allow access for servicing if the bathtub is equipped with a whirlpool system.

1. **WEIGHT:** The bathtub must be installed in a location that will support the combined weight of the tub plus the water plus the bather(s).
  - 60" Bathtub = 1000 lbs. maximum.
  - 72" Bathtub = 1400 lbs. maximum.
2. **TILE FLANGES:** The bathtub should be installed as a drop in unit. Check with local plumbing codes for requirements for other installations before the sheet rock or wet wall is installed.
3. **HOT WATER HEATER:** The size of the hot water heater is dependent on many factors such as the distance from the bathroom to the heater, number of bathrooms, temperature of the heater, etc. Typically, the capacity of the hot water heater should be at least 75% of the bathtub capacity.
4. **FRAMING:** For exact measurements and to prevent any confusion, measure the bathtub that will be installed to determine framing dimensions. Refer to catalog or contact Solure at (800) 257-4070.

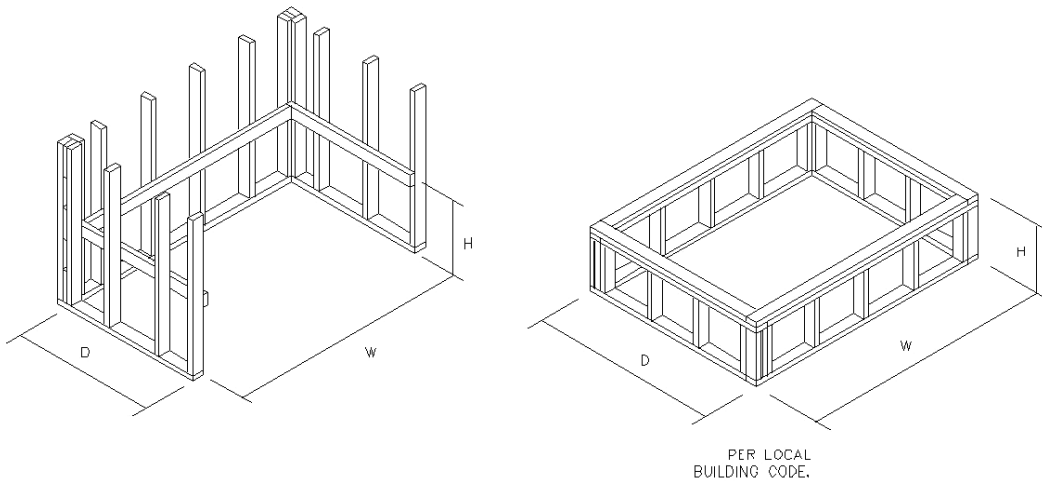
## INSTALLATION TYPES

- **DROP-IN:** For drop-in or deck mounted style tubs, the finished height of the deck where the tub will sit must be 1" greater than the dimension from the trimmed edge of the tub to the floor at the drain end of the tub. This additional space under the tub is for a mortar bed or foam filler that will support the bathtub and prevent cracking around the bottom edges or deck. The deck cannot support the whole weight of the bathtub.

$$H = X - 1''$$



## ACRYLIC BATHTUB INSTALL



### **IMPORTANT – The deck must be level both front to back and side-to-side**

If it is not level, the base will not be level and it will not drain properly.

- **THREE-WALL:** Check with local building codes. If an integral tile flange is required, then a different bathtub with this feature must be installed. For most three wall installations, the overall dimensions will be the same as the tub size. Studs and walls should be straight and plumb, and corners must be square. Stringers must be provided to support the deck where it meets the wall.

### **IMPORTANT – Stringers must be level both front to back and side to side**

If they are not level, the tub will not be level and will not drain properly.

## **ELECTRICAL REQUIREMENTS**

**WARNING:** If the bathtub is equipped with a whirlpool system, check the installation manual of the whirlpool system for important safeguards and installation instructions.

**WARNING: RISK OF ELECTRIC SHOCK. Connect *only* to a grounding type receptacle protected by a Ground Fault Circuit Interrupter (GFCI).** A GFCI should be provided by the contractor or electrician and should be tested on a regular basis. Grounding is required. All electrical connections should be made by a licensed electrician.

A dedicated 115V, 20 Amp GFCI Protected electrical circuit may be required for most Whirlpool systems.

If an optional TEE or INLINE heater is installed, an additional 115V, 20 Amp GFCI protected circuit may also be required.

## INSTALLING THE BATHTUB

The bathtub installation must follow all local building, electrical, fire and safety codes and regulations. An access panel (12" x 16" minimum) to provide future service is recommended for units equipped with whirlpools.

**CAUTION:**

READ ALL INSTRUCTIONS before continuing with the installation.

- INSPECT THE BATHTUB for cracks or any damage that may have occurred during shipping.
- Be sure that the bathtub is the correct size, model, and color that the job specifies before installing the tub. DO NOT INSTALL BEFORE CHECKING.
- Install the waste and overflow onto the bathtub per the manufacturers instructions, do not over-tighten. Use the correct sealant to prevent any water leakage.

### SET THE BATHTUB INTO PLACE

- Be sure the tub is adequately supported under the entire base and under the deck to prevent cracking.
- A batch of slow-setting mortar (without gravel) or casting plaster can be used and spread a bed of the compound onto the floor where the tub base will rest. Use more than enough to fill the space between the floor and the tub. Limit the area of the mortar bed to contain it to the area that the base of the tub will cover.
- Place the tub into the frame opening and put the tub drain into the waste line in the floor as it is being lowered. Let the tub to set into the wet mortar or compound. Allow the tub to squeeze out any excess as the deck edges meet the framing. When the deck edges meet all sides of the framing, check for straightness using a carpenter's level. Do not let the tub sink too much as the deck is not designed to support weight and damage will incur.
- Fill the bathtub 1/2 – 3/4 full with water to keep the bathtub from moving or floating as the compound sets.
- Install T- or F- flanges or tile flanges to the wall studs. Be sure to use nails or screws that will not rust and are intended for wet wall installations.

**NOTE:** The flanges can not bear the weight of the tub, be sure that the tub is fully supported by the mortar of foam and stringers.

## FINAL CLEANING

DO NOT USE ABRASIVE CLEANERS TO CLEAN THE TUB. They may scratch or mar the surface. Only liquid soap or a cleaner intended for fiberglass bathtubs should be used. Do NOT use wire brushes or metal tools or scrapers to remove paint drips, plaster, tar, etc. If a scraping device is needed, a wood edge may be used carefully.

**Notes:**

**ACRYLIC BATHTUB INSTALL**

---

**Notes:**



## Installation Instructions for

- **MK-17A** Oval tub with 72" x 42" deck and 19-1/4" deep
- **MK-22A** Oval tub with 72" x 36" deck and 19-1/4" deep
- **MK-21A** Oval tub with 60" x 42" deck and 18-1/4" deep

Please contact Solure at (661) 257- 4060

Valencia, CA USA